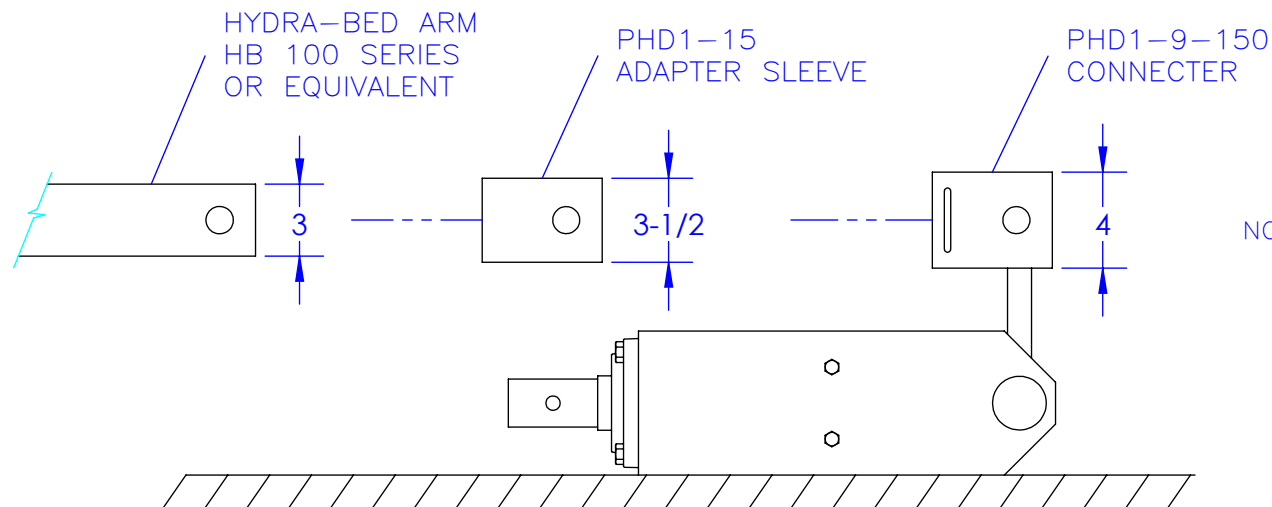


# INSTRUCTIONS FOR MOUNTING TO 3" SQUARE TUBE.

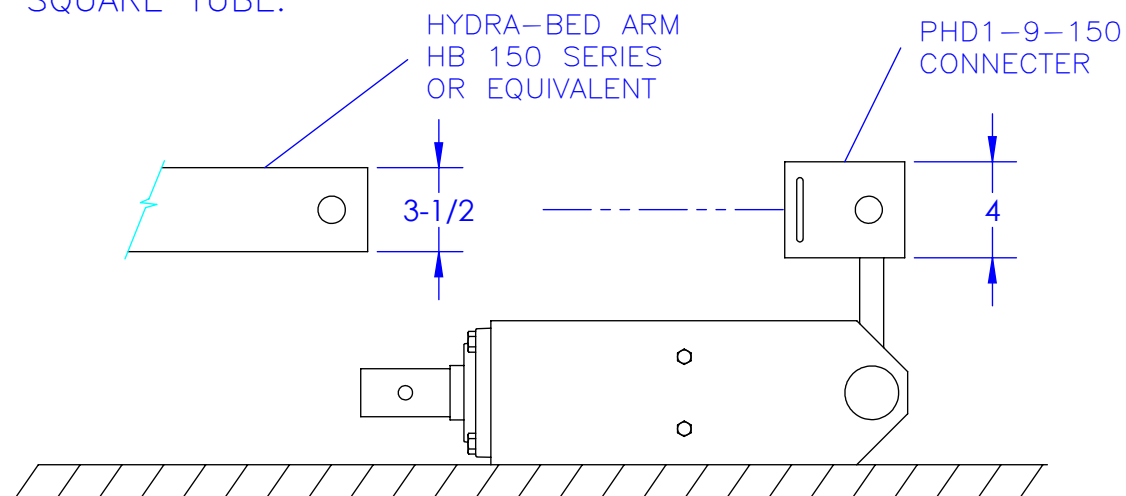
| REVISIONS |   |           |          |
|-----------|---|-----------|----------|
| REV.      | DESCRIPTION                                   | DATE      | APPROVED |
| A         | UPDATED TO NEW STANDARD<br>DWG # FROM PHD1-50 | 11/2/2012 |          |



## NOTE:

1. USE PHD1-15 ADAPTER SLEEVE WHEN MOUNTING HYDRA-PHD TO A 3" SQUARE TUBE MOUNT.
2. PHD1-15 ADAPTER SLEEVE MAY BE TACK WELDED INTO PHD1-9-150 TO PREVENT LOSS.

# INSTRUCTIONS FOR MOUNTING TO 3-1/2" SQUARE TUBE.



## NOTE:

1. PHD1-15 ADAPTER SLEEVE IS NOT REQUIRED WHEN MOUNTING HYDRA-PHD TO A 3-1/2" SQUARE TUBE MOUNT.

**PROPRIETARY AND CONFIDENTIAL**  
THE INFORMATION CONTAINED IN THIS  
DRAWING IS THE SOLE PROPERTY OF TRIPLE  
C INC. ANY REPRODUCTION IN PART OR  
AS A WHOLE WITHOUT THE WRITTEN  
PERMISSION OF TRIPLE C INC. IS PROHIBITED.

DIMENSIONS ARE IN INCHES  
TOLERANCES:  
FRACTIONAL  $\pm 1/16$   
ANGULAR: MACH  $\pm 1$  BEND  $\pm$   
TWO PLACE DECIMAL  $\pm 010$   
THREE PLACE DECIMAL  $\pm 005$

MATERIAL --  
DO NOT SCALE DRAWING

|                    |           |
|--------------------|-----------|
| NAME               | DATE      |
| DRAWN <b>HEATH</b> | 11/2/2012 |
| PART #             |           |
| ASM #              |           |
| COMMENTS:          |           |

**HYDRA-PHD  
MOUNTING  
INSTRUCTIONS**

P.O. BOX 248,  
SABETHA, KS 66534

**TRIPLE C**  
INC.

|                  |                            |                  |
|------------------|----------------------------|------------------|
| SIZE<br><b>A</b> | DWG. NO.<br><b>60-0904</b> | REV.<br><b>A</b> |
| SCALE: 1:1       | WEIGHT: --                 | SHEET 1 OF 1     |